

PLANNING STUDY  
CITY OF CENTER  
SHELBY COUNTY, TEXAS

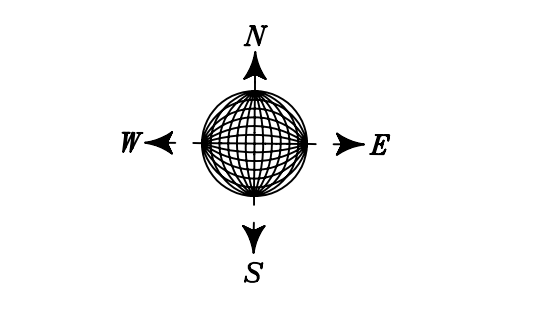
FIGURE 9.2  
DRAINAGE SYSTEM PLAN

PLANNING PERIOD  
2004 - 2024

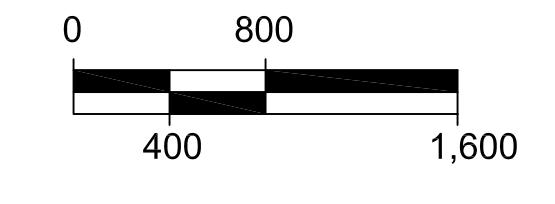
T.M.F. GLENNING & ASSOCIATES, INC.  
501 THREE LAKE DRIVE  
PLANO, TEXAS 75093  
972.759.9424  
PLANNING AND MANAGEMENT CONSULTANTS  
FEBRUARY, 2005

BASE MAPPING PROVIDED BY:  
**SA** STOKES & ASSOCIATES, INC.  
CONSULTANT ENGINEERS  
P.O. BOX 1114 HENDERSON, TEXAS 75643  
(903) 657-7558 Fax (903) 657-7664

FINANCED THROUGH THE OFFICE OF RURAL COMMUNITY AFFAIRS OF THE STATE OF TEXAS. The preparation of this document was financed through the provisions of a Texas Community Development Program Grant from the U.S. Department of Housing and Urban Development.

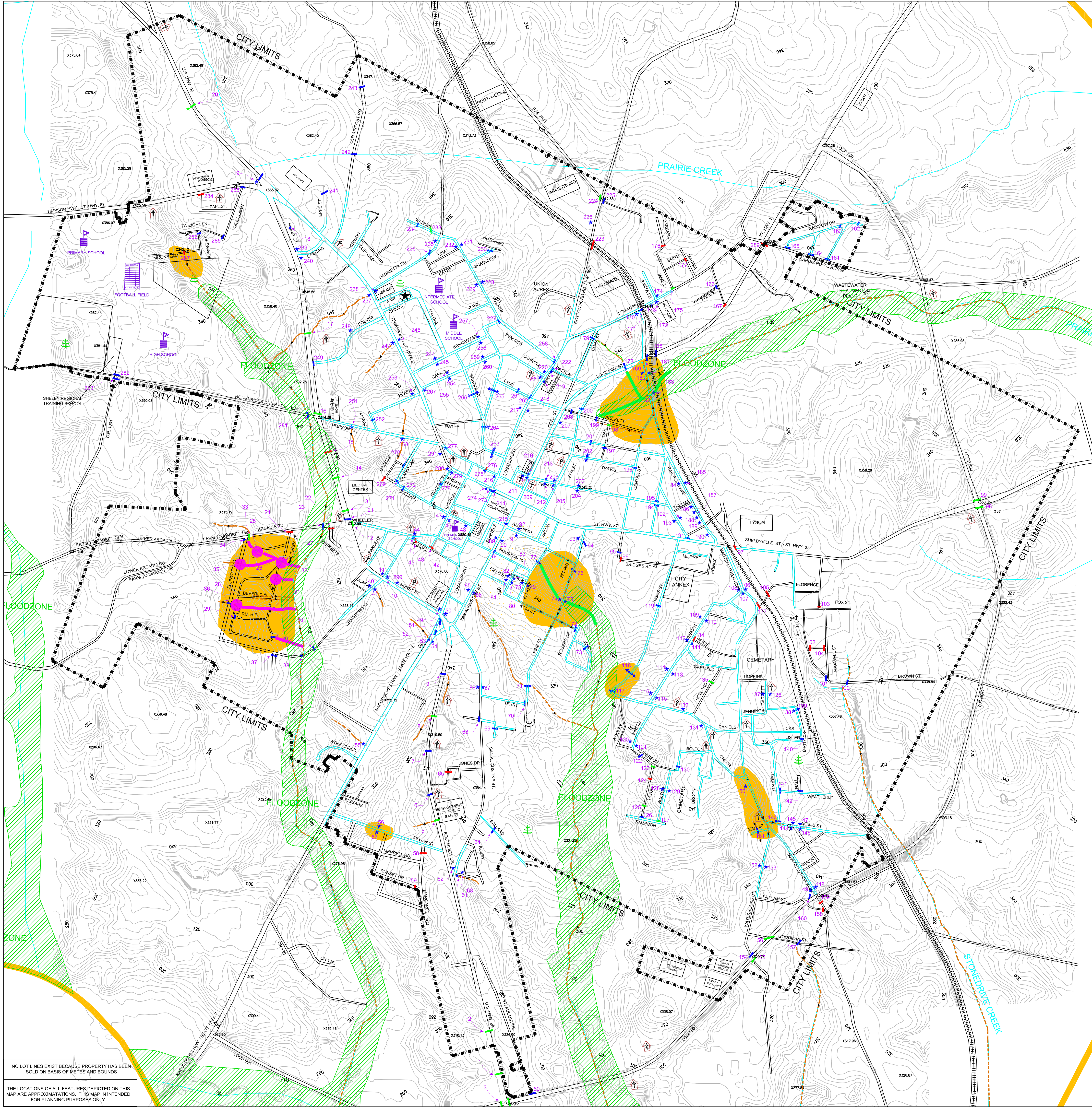


- LEGEND**
- CITY PARK
  - WATER TOWER
  - SCHOOL
  - CHURCH
  - CITY HALL



- PHASE 1 - (2004 - 2006)
- PHASE 2 - (2006 - 2008)
- Clean/Reshape/Replace culverts
- Clean/Reshape Drainage Channels

- CONTOUR LINES
- CURB AND GUTTER EXISTS
- DRAINAGE FACILITY - GOOD CONDITION
- DRAINAGE FACILITY - OVERGROWN WITH VEGETATION OR PARTIALLY CLOGGED
- DRAINAGE FACILITY - PARTIALLY CRUSHED
- REFERENCE TO DRAINAGE STRUCTURE (SEE DRAINAGE STRUCTURE INVENTORY TABLE)
- LOCAL FLOODING HAS OCCURRED
- EXISTING UNDERGROUND DRAINAGE SYSTEM
- GENERAL DRAINAGE PATTERN



NO LOT LINES EXIST BECAUSE PROPERTY HAS BEEN SOLD ON BASIS OF METES AND BOUNDS  
THE LOCATIONS OF ALL FEATURES DEPICTED ON THIS MAP ARE APPROXIMATIONS. THIS MAP IS INTENDED FOR PLANNING PURPOSES ONLY.